

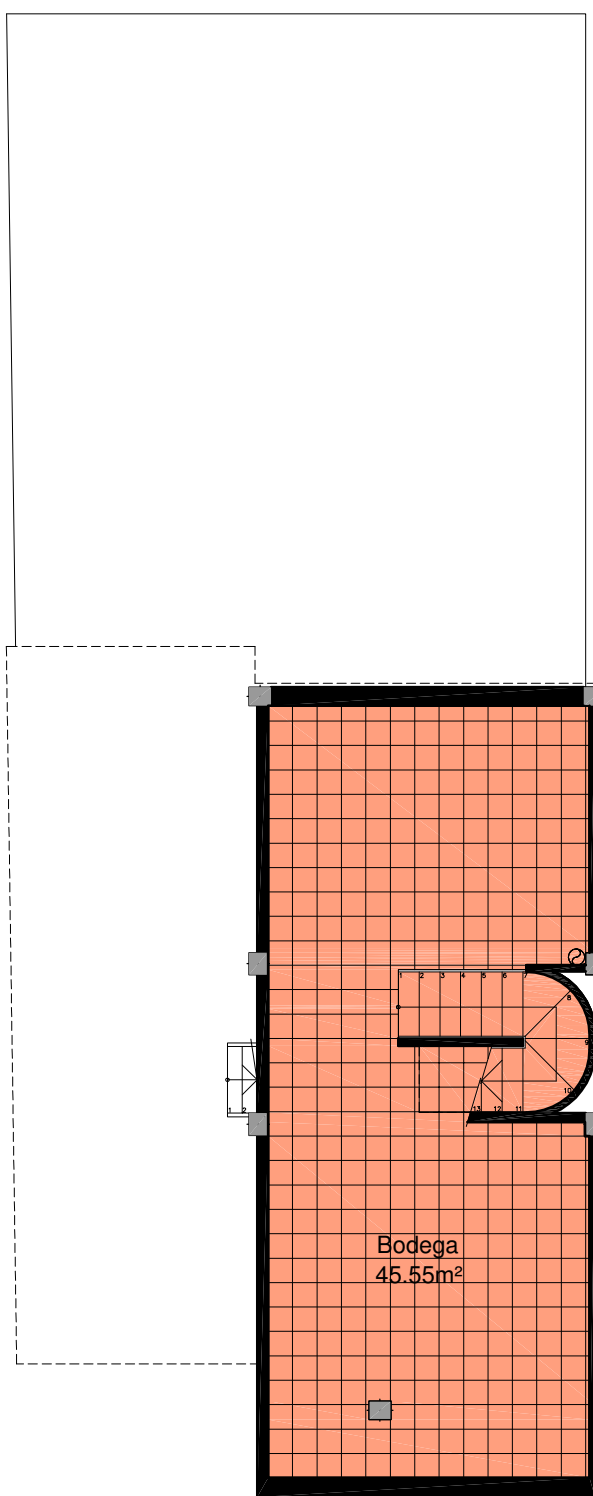
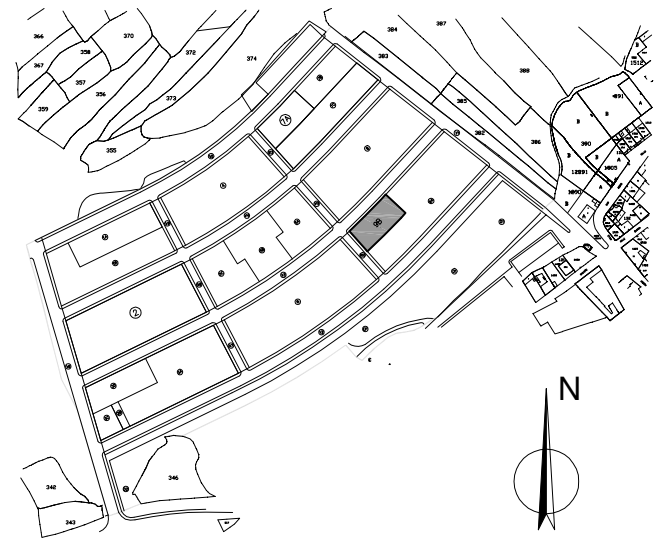
6 VIVIENDAS UNIFAMILIARES EN Urb. CHARAS (parcela 9b) - MURCHANTE

superficies construidas

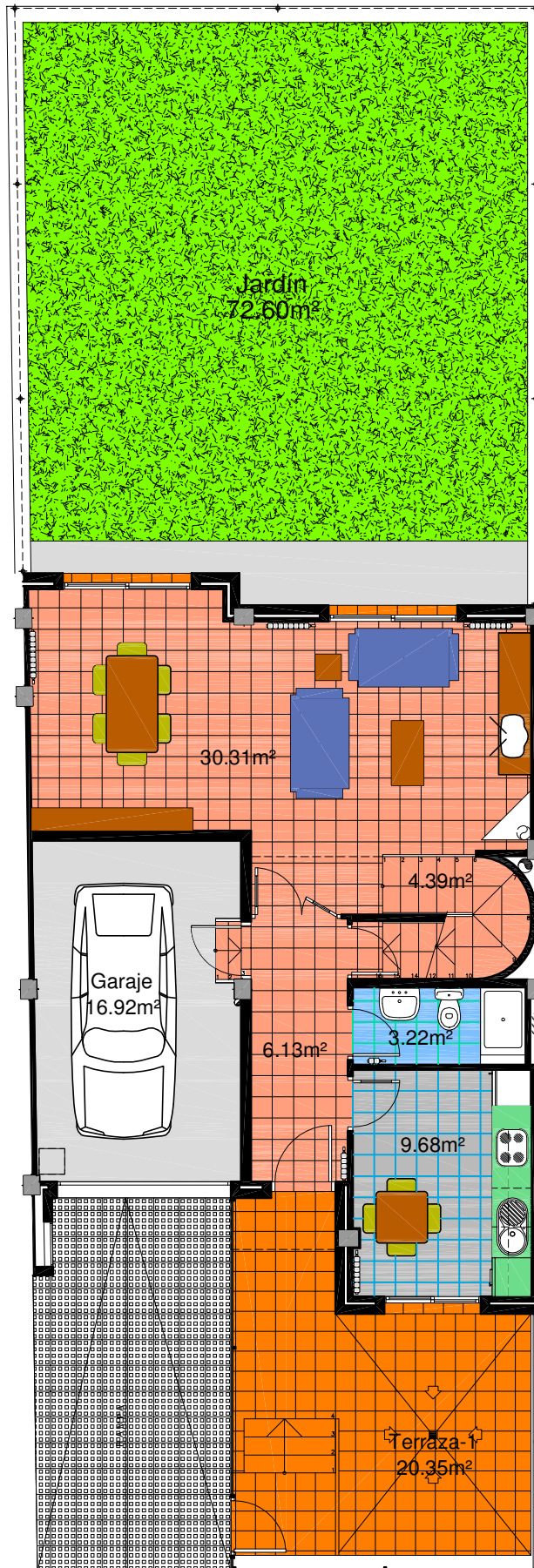
Sup. VIVIENDA -	140.73 m ²
Sup. BODEGA -	50.22 m ²
Sup. GARAJE -	18.92 m ²
TOTAL -	209.87 m ²

ESCALA GRAFICA

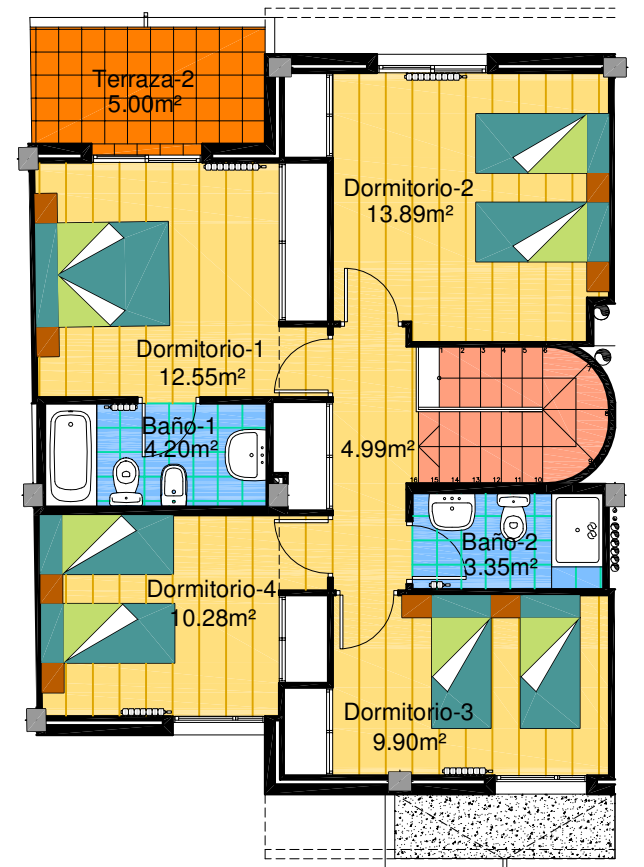
0m 1m



P. SOTANO



P. BAJA



P. PRIMERA